

SBAC.EDU/REZONING



REZONING

ALACHUA COUNTY PUBLIC SCHOOLS



Table Of Contents

➤ **Objectives**

➤ **Methodology**

➤ **Capacity**

➤ **Zone Lines**

➤ **Considerations**

➤ **Important Dates**


Objectives

- **Align Student Enrollment with School Capacity**
 - **Considering current and projected enrollment (including active development)**
- **Prioritize Fiscal Responsibility and Efficiency**
 - **Facilities**
 - **Transportation**
 - **Personnel**



Methodology

Constraints used to make decisions about determining zone lines

- **Transportation Challenges**
 - **School Capacity**
 - **Magnet/Program Enrollment**
- 



School Capacity

Legend for Elementary, Middle, and High School Charts

<p>Mixed grade levels are noted in parentheses and accounted for in projections (green columns)</p>	<p>Capacity reflects brick and mortar buildings, not portables. <i>Overcapacity (90%+)</i></p>	<p>Based on Survey 3 FTE Data from February 2023</p>	<p>Based on current enrollment as of August 24, 2023, after 10-Day Count across the school district</p>	<p>Projections made considering current student addresses, using student data from 2023 FTE (2/10/23)</p>	<p>Current Magnet Programs and respective enrollments for each program</p>
<p>DISTRICT TOTAL</p>	<p>Total number of students enrolled by school year for the school district, not including PK, center schools, or non-zoned schools.</p>				

ELEMENTARY SCHOOL ENROLLMENT & CAPACITY

School	Capacity <small>*Not including portables, center/non-zoned schools, or unused sites (i.e. Duval, Prarie View, and Old Terwilliger)</small>	# Enrolled (22-23) <small>*As of 2/10/23</small>	% Enrolled (22-23) <small>*As of 2/10/23</small>	# Enrolled (23-24) <small>*As of 8/24/23</small>	% Enrolled (23-24) <small>*As of 8/24</small>	Only ACS Students Currently Attending a Zoned School in the Proposed Zone (24-25) <small>*Projected public school enrollment</small>	% Projected Enrollment (24-25)	ALL Students Living in the Proposed Zone (24-25) <small>*includes children who may use vouchers, attend private, charter, home or virtual school, etc.</small>	Magnets (Grade Level)	Current Magnet Enrollment (23-24)
Alachua (3-5)	326	525	161%	320	98%	475	146%	625		
Archer	489	457	93%	426	87%	396	81%	447	Gifted and Talented Studies (3-5)	114
Chiles	727	748	103%	680	94%	660	91%	715		
Foster	467	457	98%	395	85%	415	89%	471	STEM (3-5)	79
Glen Springs	463	431	93%	441	95%	429	93%	507		
Hidden Oak	744	790	106%	726	98%	790	106%	861		
High Springs (K-4)	1,009	987	98%	942	93%	848 560 K-5th Grade / 288 6-8th Grade	84%	959 635 K-5th Grade / 324 6-8th Grade		
Idylwild	662	514	78%	600	91%	631	95%	784		
Irby (K-2)	536	381	71%	349	65%	418	78%	563		
Lake Forest	598	334	56%	278	46%	497	83%	662		
Littlewood	588	724	123%	696	118%	799	136%	886		
Meadowbrook	758	874	115%	867	114%	724	96%	790		
Metcalf	624	467	75%	433	69%	403	65%	528	STEAM (K-5)	19
Newberry ES (K-4)	471	665	141%	627	133%	602 K-5th Gr. / 490 K-4th Gr.	128% K-5th Gr. 104% K-4th Gr.	682 K-5th Gr. / 552 K-4th Gr.		
Norton	669	595	89%	537	80%	459	69%	560		
Parker	489	520	106%	490	100%	323	66%	383	<i>*ESOL Center</i>	
Rawlings	427	427	100%	399	93%	338	79%	456	Center for Fine Arts (K-5)	12
Shell	366	349	95%	303	83%	337	92%	426		
Talbot	726	658	91%	617	85%	706	97%	782		
Terwilliger	962	618	64%	603	63%	618	64%	725	Dual Language Immersion (K-1)	51
Wiles	725	872	120%	812	112%	821	113%	924		
Williams	590	479	81%	454	77%	483	82%	583	Williams Magnet (2-5)	140
DISTRICT TOTAL	13,416	12,872		11,995		12,172		14,319		415

MIDDLE SCHOOL ENROLLMENT & CAPACITY

School	Capacity <small>*Not including portables, center/non-zoned schools, or unused sites (i.e. Duval, Prairie View, and Old Terwiliger)</small>	# Enrolled (22-23) <small>*As of 2/10/23</small>	% Enrolled (22-23) <small>*As of 2/10/23</small>	# Enrolled (23-24) <small>*As of 8/24/23</small>	% Enrolled (23-24) <small>*As of 8/24/23</small>	Only ACS Students Currently Attending a Zoned School in the Proposed Zone (24-25) <small>*Projected public school enrollment **Does not include center or non-zoned schools</small>	% Projected Enrollment (24-25)	ALL Students Living in the Proposed Zone (24-25) <small>*includes children who may use vouchers, attend private, charter, home or virtual school, etc.</small>	Magnets (Grade Level)	Current Magnet Enrollment (23-24)
Bishop	1,075	837	78%	842	78%	547	51%	636	Academy of Technology and Advanced Studies	352
Fort Clarke	871	955	110%	901	103%	1035	119%	1128		
Hawthorne (6-12)	660	457	69%	486	74%	460 middle / (208 high)	70%	551 (248 middle / 303 high)	Agribusiness (HS Only)	
High Springs (K-8)	1,009	987	98%	942	93%	848 560 K-5th Grade / 288 6-8th Grade	84%	959 635 K-5th Grade / 324 6-8th Grade		
Kanapaha	1,166	1,105	95%	1,065	91%	1124	96%	1249		
Lincoln	1,053	722	69%	702	67%	602	57%	714	The Lyceum (6-8)	350
Mebane	788	336	43%	382	48%	576	73%	751	Biomedical Mustangs (6-7)	41
Oak View (5-8)	1,063	974	92%	947	89%	633 6-8th Grade / 745 5-8th Grade, including 112 Newberry Elem Zone 5th Graders	70%	Grade / 833 5- 8th Grade, including 130 Newberry Elem Zone 5th	Center for Advanced Academics and Technology (6-8)	186
Westwood	1,112	844	76%	786	71%	1102	99%	1278	<i>ESOL Center</i>	
DISTRICT TOTAL	8,797	7,217		7,053		7,039		8,099		929

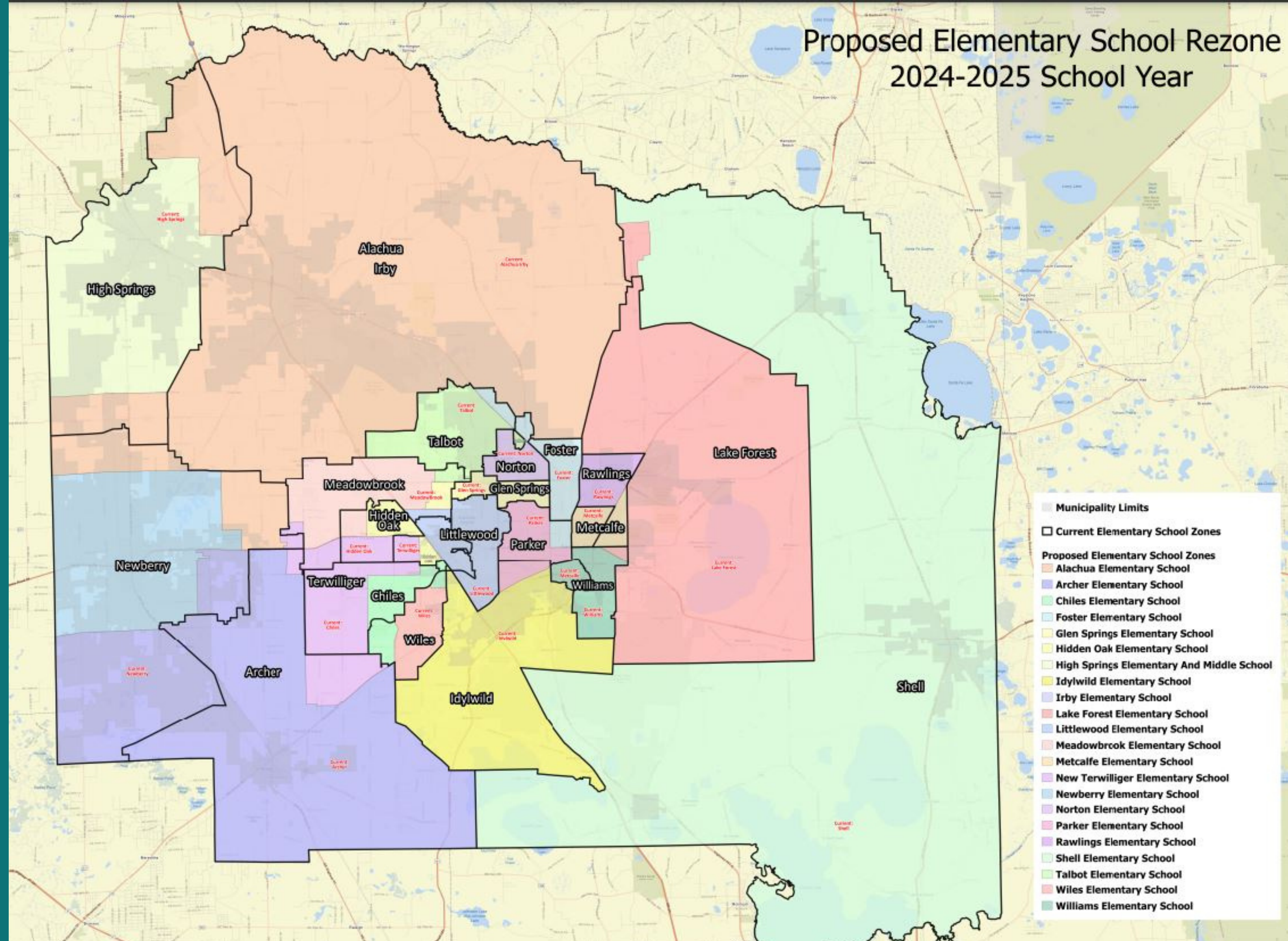
HIGH SCHOOL ENROLLMENT & CAPACITY

School	Capacity <small>*Not including portables, center/non-zoned schools, or unused sites (i.e. Duval, Prarie View, and Old Terwiliger)</small>	# Enrolled (22-23) <small>*As of 2/10/23 **Includes Dual Enrollment</small>	% Enrolled (22-23) <small>*As of 2/10/23 **Includes Dual Enrollment</small>	# Enrolled (23-24) <small>*As of 8/24/23 **Includes Dual Enrollment</small>	% Enrolled (23-24) <small>*As of 8/24/23 **Includes Dual Enrollment</small>	Only ACP's Students Currently Attending a Zoned School in the Proposed Zone (24-25) <small>*Projected public school enrollment</small>	% Projected Enrollment (24-25)	ALL Students Living in the Proposed Zone (24-25) <small>*Includes children who may use vouchers, attend private, charter, home or virtual school, etc.</small>	Magnets (9th-12th Grade) <small>*Except Media @ PAM, 9th Only</small>	Current Magnet Enrollment (23-24)
Buchholz	2,006	2,489	124%	2,463	123%	2233	111%	2560	Entrepreneurship Finance	(686) 338 / 348
Eastside	1,952	1,208	62%	1,236	63%	1195	61%	1540	International Baccalaureate Culinary Arts Both Programs (IB & Culinary)	(446) 380 / 57 / 15
Gainesville	1,926	1,804	94%	1,778	92%	1879	98%	2277	Cambridge Future Teachers Health Professions Multi Prog (Cambridge + FTA/HP) <i>*ESOL Center</i>	(597) 340 / 68 / 105 / 84
Hawthorne (6-12)	660	457	69%	486 (209 middle / 277 high)	74%	460 (208 middle / 252 high)	70%	551 (248 middle / 303 high)	Agribusiness	46
Loften (PAM)	508	268	53%	315	62%	Non-Zoned School	Non-Zoned School	Non-Zoned School	Automotive Technology Fire & EMS Gaming & Mobile Apps Graphic Art & Design Media Production Technology (9) Robotics & Engineering	(317) 45 / 51 / 73 / 80 / 19 / 49
Newberry HS	671	705	105%	746	111%	660	98%	784	Criminal Justice (9-12)	128
Santa Fe	1,291	1,141	88%	1,151	89%	1268	98%	1458	Agriscience Veterinary Assisting Biotechnology	(243) 53 / 117 / 73
DISTRICT TOTAL	9,014	8,072				7,695		9,170		2,463

2024-2025 SY Maps (Projected Zones)

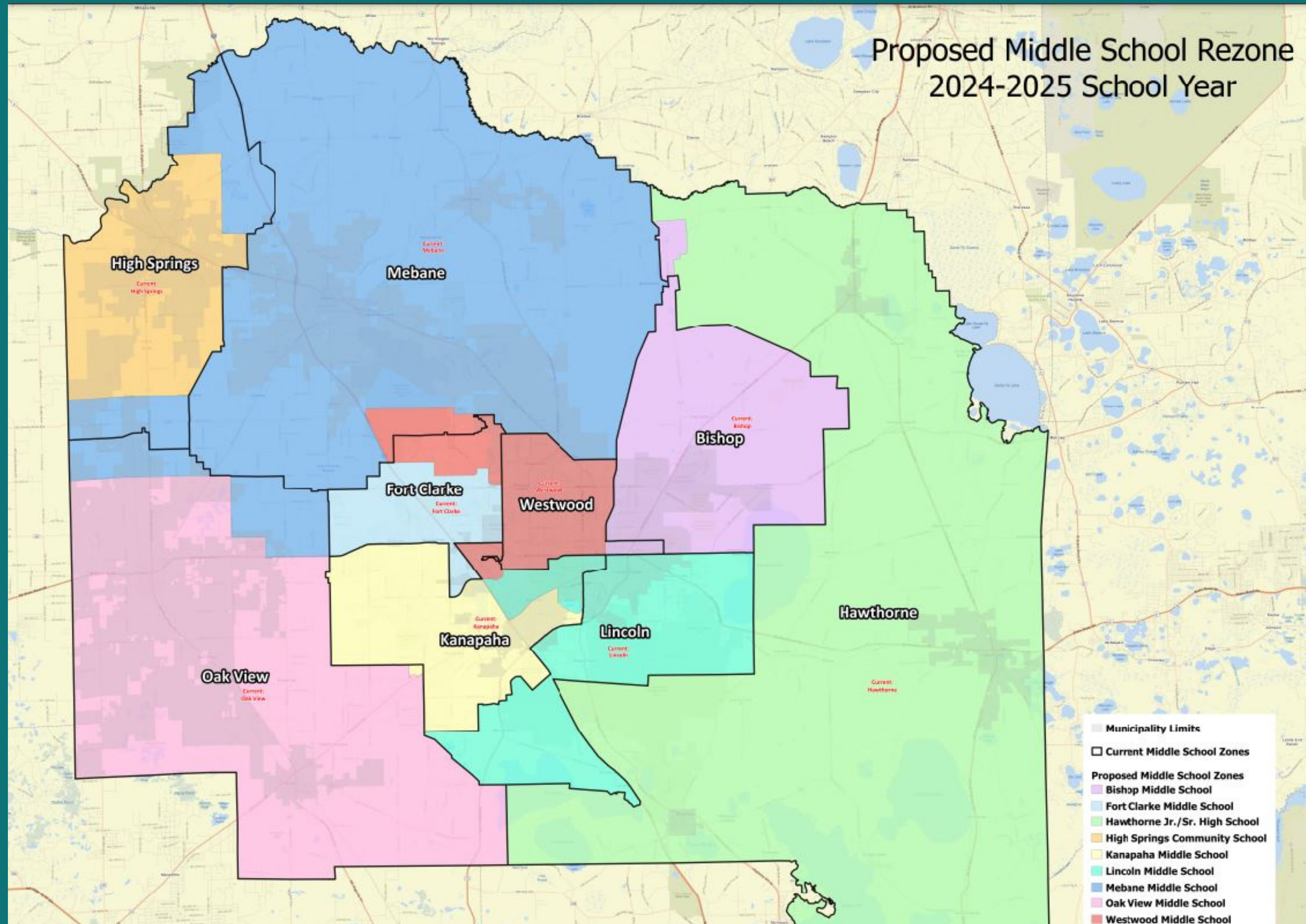
- **Elementary, Middle, and High**

Proposed Elementary School Rezone 2024-2025 School Year

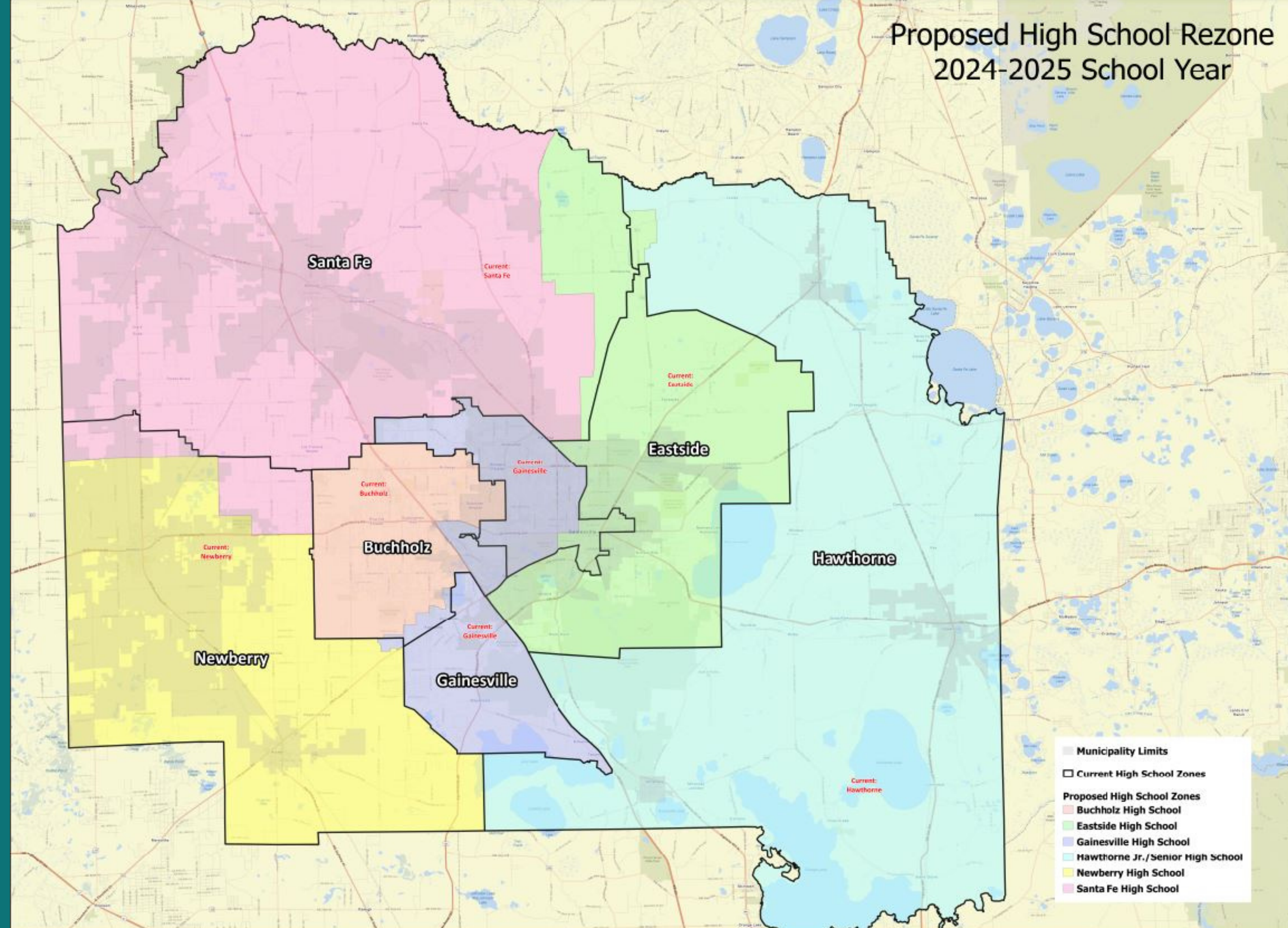


- Municipality Limits
- Current Elementary School Zones
- Proposed Elementary School Zones
 - Alachua Elementary School
 - Archer Elementary School
 - Chiles Elementary School
 - Foster Elementary School
 - Glen Springs Elementary School
 - Hidden Oak Elementary School
 - High Springs Elementary And Middle School
 - Idylwild Elementary School
 - Irby Elementary School
 - Lake Forest Elementary School
 - Littlewood Elementary School
 - Meadowbrook Elementary School
 - Metcalfe Elementary School
 - New Terwilliger Elementary School
 - Newberry Elementary School
 - Norton Elementary School
 - Parker Elementary School
 - Rawlings Elementary School
 - Shell Elementary School
 - Talbot Elementary School
 - Wiles Elementary School
 - Williams Elementary School

Proposed Middle School Rezone 2024-2025 School Year



Proposed High School Rezone 2024-2025 School Year



- Municipality Limits
- Current High School Zones
- Proposed High School Zones**
- Buchholz High School
- Eastside High School
- Gainesville High School
- Hawthorne Jr./Senior High School
- Newberry High School
- Santa Fe High School

Considerations

➤ Revitalized Facilities

- Littlewood Elementary School (Reopens 2025-2026 SY, increased seat count available)
- Westwood Middle School (2024-2025 SY)

➤ Probable Impacts on Enrollment Data

- Expansion of School Voucher Program
- Increase in Number of Charter Schools
- Home School
- Private School
- Virtual School
- Magnet Programs / Dual Enrollment
 - Reduce seat allotments for incoming freshmen
 - Review and revise procedures

Revisit Objectives and Anticipated Outcomes

- **Align Student Enrollment with School Capacity**
 - Considering current and projected enrollment (including active development)
- **Prioritize Fiscal Responsibility and Efficiency**
 - Facilities
 - Transportation
 - Personnel

Community Input Sessions

August 22, 5:30 pm Hawthorne MS/HS Auditorium

August 24, 5:30 pm Howard Bishop MS Cafeteria

August 28, 5:30 pm Santa Fe HS Auditorium

August 29, 5:30 pm Kanapaha MS Cafeteria

October 5, 5:30 pm Newberry HS Auditorium

October 10, 5:30 pm Gainesville HS Auditorium



School Board Meeting Dates

- September 19, 6 pm: Regular Board meeting (including first reading of proposed zones)
- October 17, 4 pm: Public Hearing on proposed zones
- November 7 at 6 pm: Regular Board meeting (including second reading/vote on revised attendance zones)





**THANK
YOU**