

SBAC.EDU/REZONING



REZONING

ALACHUA COUNTY PUBLIC SCHOOLS



Table Of Contents

➤ **Objectives**

➤ **Methodology**

➤ **Capacity**

➤ **Zone Lines**

➤ **Considerations**

➤ **Important Dates**


Objectives

- **Align Student Enrollment with School Capacity**
 - **Considering current and projected enrollment (including active development)**
- **Prioritize Fiscal Responsibility and Efficiency**
 - **Facilities**
 - **Transportation**
 - **Personnel**



Methodology

Constraints used to make decisions about determining zone lines

- **Transportation Challenges**
 - **School Capacity**
 - **Magnet/Program Enrollment**
- 



School Capacity

ELEMENTARY SCHOOL ENROLLMENT & CAPACITY

| School | Enrolled | Capacity | % Enrolled | Magnets |
|---------------------|----------|----------|------------|-----------------------------|
| Newberry ES (PK-4) | 665 | 471 | 141% | |
| Littlewood | 724 | 588 | 123% | |
| Kimball Wiles | 872 | 725 | 120% | |
| Meadowbrook | 874 | 758 | 115% | |
| Parker | 520 | 489 | 106% | |
| Hidden Oak | 790 | 744 | 106% | |
| Chiles | 748 | 727 | 103% | |
| Rawlings | 427 | 427 | 100% | Center for Fine Arts |
| Foster | 457 | 467 | 98% | STEM |
| High Springs (PK-8) | 987 | 1,009 | 98% | |
| Shell | 349 | 366 | 95% | |
| Archer | 457 | 489 | 93% | Gifted and Talented Studies |
| Glen Springs | 431 | 463 | 93% | |
| Talbot | 658 | 726 | 91% | |
| Norton | 595 | 669 | 89% | |
| Williams | 479 | 590 | 81% | Williams Magnet |
| Idylwild | 514 | 662 | 78% | |
| Metcalfe | 467 | 624 | 75% | STEAM |
| Irby | 381 | 536 | 71% | |
| Terwilliger | 618 | 962 | 64% | Dual Language Immersion |
| Alachua ES | 326 | 525 | 62% | |
| Lake Forest | 334 | 598 | 56% | |

MIDDLE SCHOOL ENROLLMENT & CAPACITY

| School | Enrolled | Capacity | % Enrolled | Magnets |
|----------------|----------|----------|------------|---|
| Fort Clarke | 955 | 871 | 110% | |
| Kanapaha | 1,105 | 1,166 | 95% | |
| Oak View (5-8) | 974 | 1,063 | 92% | Center for Advanced Academics and Technology |
| Bishop | 837 | 1,075 | 78% | Academy of Technology and Advanced Studies |
| Westwood | 844 | 1,112 | 76% | |
| Lincoln | 722 | 1,053 | 69% | Lyceum |
| Mebane | 336 | 788 | 43% | Biomedical Mustangs |

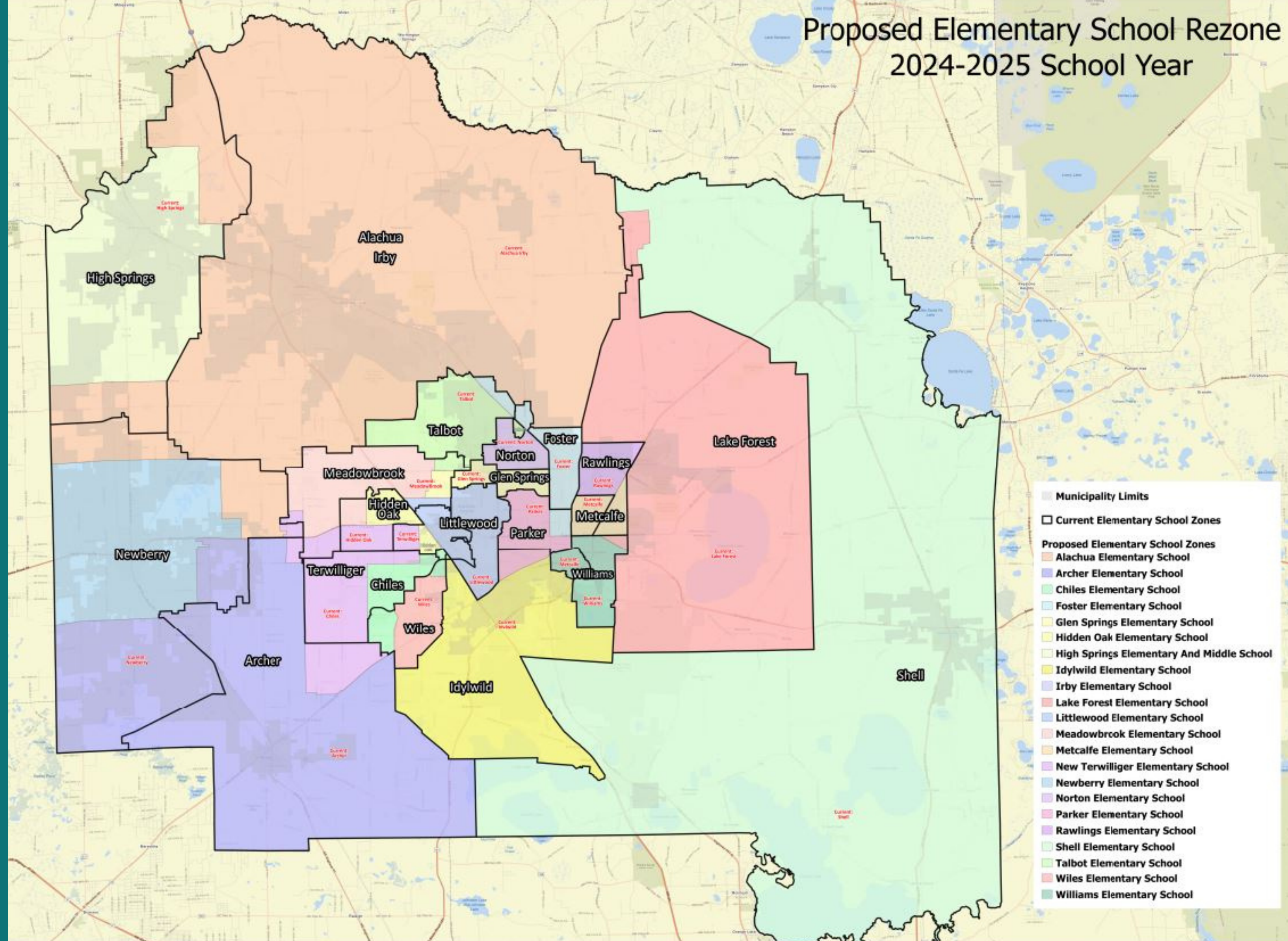
HIGH SCHOOL ENROLLMENT & CAPACITY

| School | Enrolled | Capacity | % Enrolled | Magnets |
|------------------|----------|----------|------------|--|
| Buchholz | 2,489 | 2,006 | 124% | Entrepreneurship Finance |
| Newberry HS | 705 | 671 | 105% | Criminal Justice |
| Gainesville | 1,804 | 1,926 | 94% | Cambridge Future Teachers Health Professions |
| Santa Fe | 1,141 | 1,291 | 88% | Agriscience Veterinary Assisting Biotechnology |
| Hawthorne (6-12) | 457 | 660 | 69% | Agribusiness |
| Eastside | 1,208 | 1,952 | 62% | International Baccalaureate Culinary Arts |
| Loften | 268 | 508 | 53% | Automotive Technology Fire & EMS Gaming & Mobile Apps Graphic Art & Design Media Production Technology Robotics & Engineering |

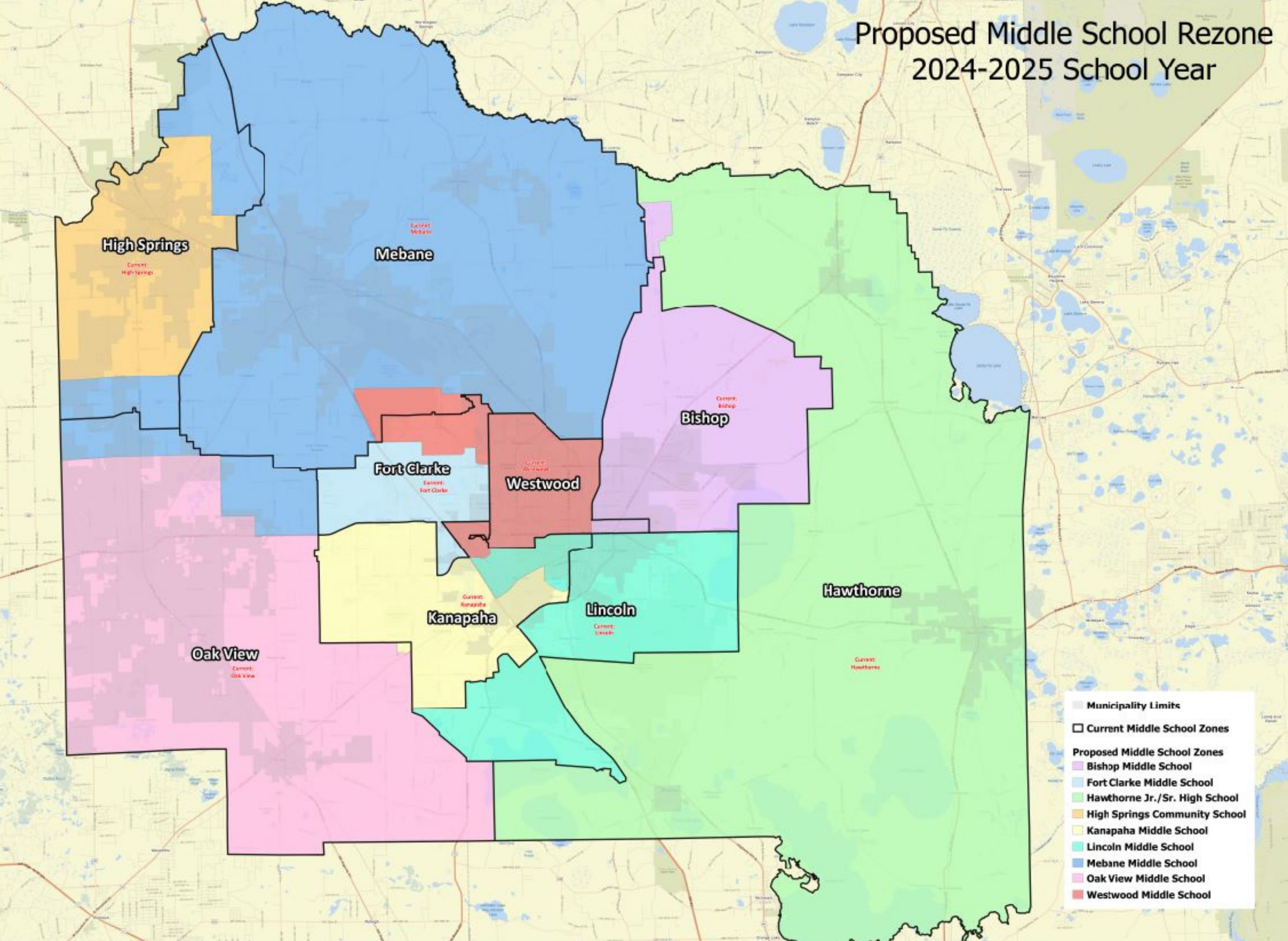
2024-2025 SY Maps (Projected Zones)

- **Elementary, Middle, and High**

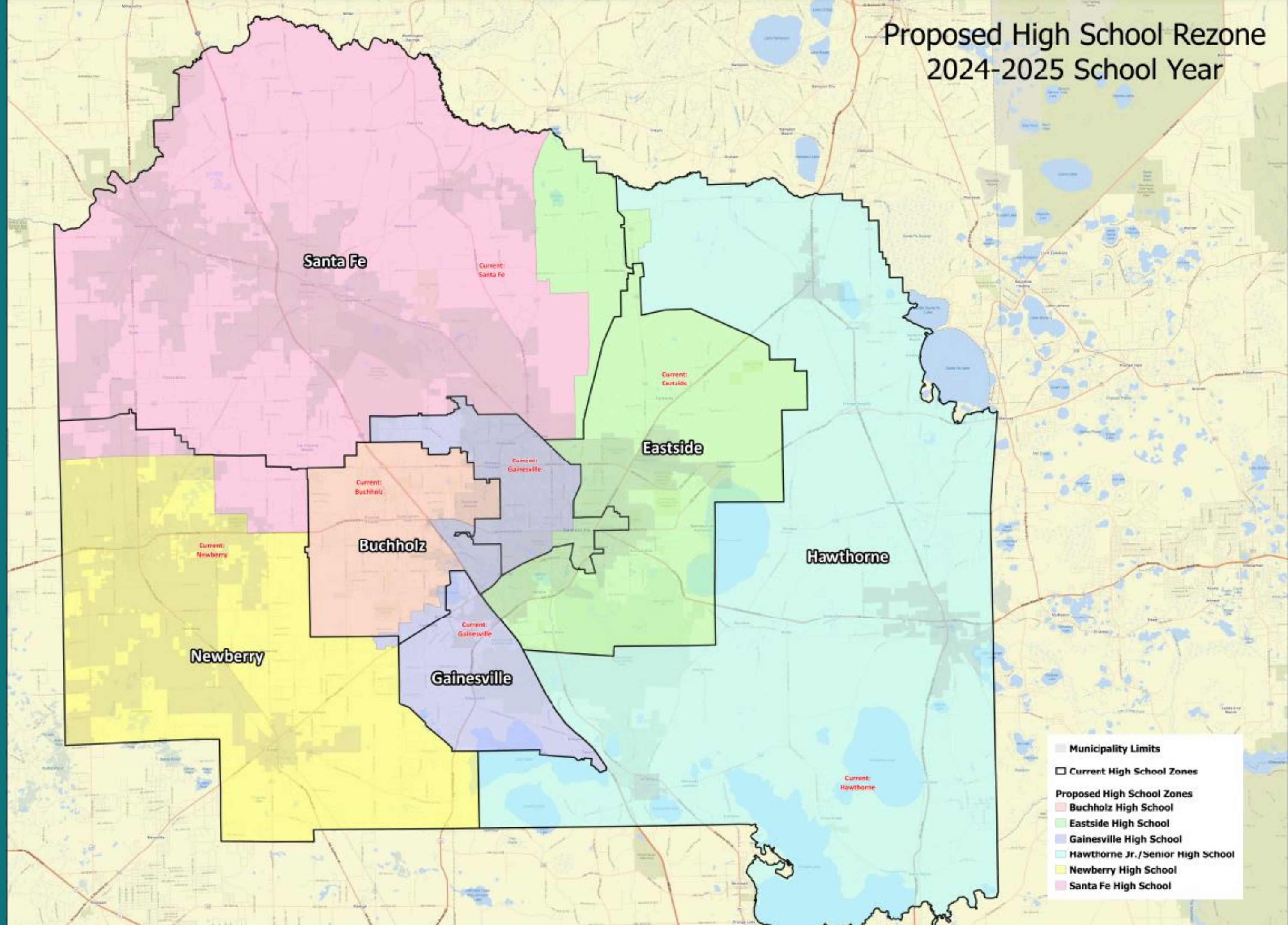
Proposed Elementary School Rezone 2024-2025 School Year



Proposed Middle School Rezone 2024-2025 School Year



Proposed High School Rezone 2024-2025 School Year



Considerations

➤ Revitalized Facilities

- Littlewood Elementary School (Reopens 2025-2026 SY, increased seat count available)
- Westwood Middle School (2024-2025 SY)

➤ Probable Impacts on Enrollment Data

- Expansion of School Voucher Program
- Increase in Number of Charter Schools
- Home School
- Private School
- Virtual School
- Magnet Programs / Dual Enrollment
 - Reduce seat allotments for incoming freshmen
 - Review and revise procedures

Revisit Objectives and Anticipated Outcomes

- **Align Student Enrollment with School Capacity**
 - Considering current and projected enrollment (including active development)
- **Prioritize Fiscal Responsibility and Efficiency**
 - Facilities
 - Transportation
 - Personnel

Community Input Sessions

August 22, 5:30 pm Hawthorne MS/HS Auditorium

August 24, 5:30 pm Howard Bishop MS Cafeteria

August 28, 5:30 pm Santa Fe HS Auditorium

August 29, 5:30 pm Kanapaha MS Cafeteria

October 2, 1 pm SWAG Family Resource Center

October 5, 5:30 pm Newberry HS Auditorium

October 10, 5:30 pm Gainesville HS Auditorium



School Board Meeting Dates

- September 19, 6 pm: Regular Board meeting (including first reading of proposed zones)
- October 17, 4 pm: Public Hearing on proposed zones
- November 7 at 6 pm: Regular Board meeting (including second reading/vote on revised attendance zones)

